

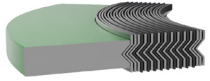
Spiral Wound Gasket GSI-GS DS (Dual Service) Product Range

Description:

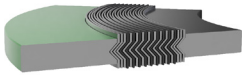
3S SWG gaskets are wound with a “V” section profiled metal strip along with a soft filler material. The “V” section metal strip ensures the gasket has excellent compressibility and recovery under various applications. The soft filler material ensures sealability against the flange face, offering optimum performance.

GSI – GS DS gaskets are designed to reduce inventory in Class 150lb and 300lb pressure classes from ½” to 24” nominal pipe sizes ONLY.

Style:

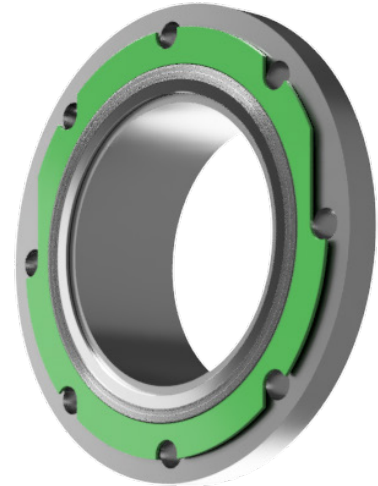


Style GS are comprised of the metal wire with designated filler incorporating the use of a solid metal outer ring. The outer guide ring promotes the correct centering of the gasket in a standard flange, offers radial support for the outer portion of the spiral wound, and acts as compression gauge to prevent over compression of the spiral wound.

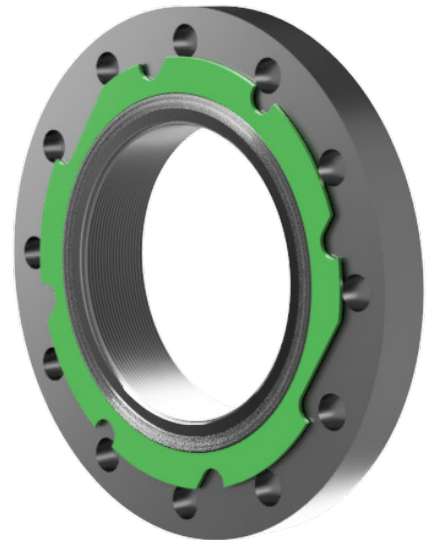


Style GSI are same as our Style GS with the only difference being an additional inner ring. Just like the outer ring, the inner ring serves multiple functions including: radial support for the inner portion of the spiral wound, prevents inward buckling and helps to provide uniform gasket stress

8” 150lb Flange



8” 300lb Flange



Example of a GSI - DS
8” 150 & 300lb Gasket

Maximum Temperature (Filler)	
3S Inhibited Graphite	850°F (454°C)
APX2® Graphite	975°F (524°C)
PTFE	500°F (260°C)
Mica	1800°F (982°C)
Mica/APX2®/Mica (HTG)	Min -238°F (-150°C) Max 1500°F (815°C)
Ceramic	2000°F (1093°C)
Maximum Temperature (Alloys)	
304 / 304L SS	1400°F (760°C)
316 SS	1400°F (760°C)
316L SS	1400°F (760°C)
321 SS	1500°F (815°C)
347 SS	1500°F (815°C)
Monel	1500°F (815°C)
Inconel 600	2000°F (1093°C)
Carbon Steel	900°F (482°C)