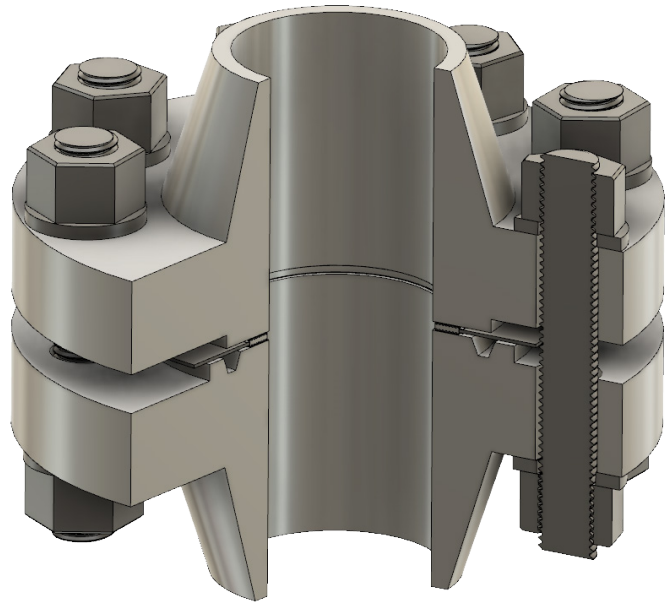
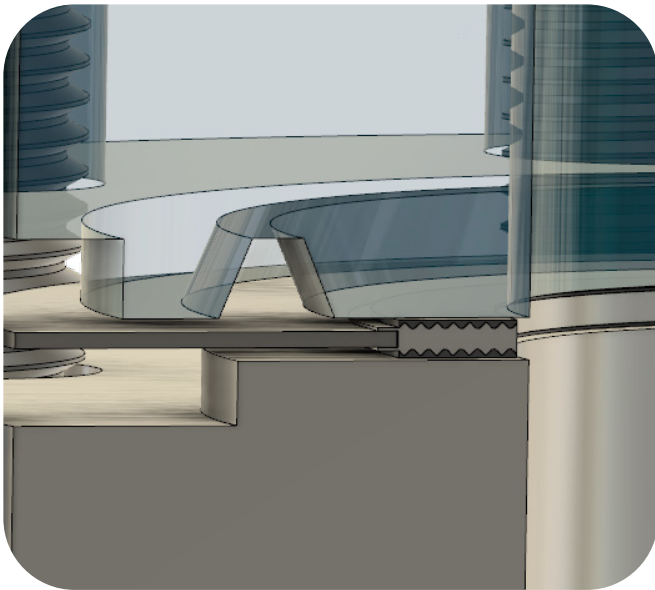


Kammprofile KP3-RJ Product Information

Description:

3S provides a sealing solution for Ring Type Joint flanges where the gasket groove(s) are damaged or where there is a Raised Face flange connecting to a Ring Type Joint flange. The sealing solution consists of a kammprofile core that is positioned on the inside of the grooved flange, the guide ring extends out to sit on the inside of the bolts. An example is shown in the image below.



With the KP3-RJ gasket being a Kammprofile (Grooved Metal Gasket) sealing element, the design can be utilized on flanges up to ASME B16.5 Class 2500#.

FIRE SAFE APPROVED ACCORDING TO
API 6FB (GRAPHITE FACING)

Maximum Temperature (Filler)	
3S Inhibited Graphite	850°F (454°C)
APX2® Graphite	975°F (524°C)
PTFE	500°F (260°C)
Mica	1800°F (982°C)
Mica/APX2®/Mica (HTG)	Min -238°F (-150°C) Max 1500°F (815°C)
Ceramic	2000°F (1093°C)
Maximum Temperature (Alloys)	
304 / 304L SS	1400°F (760°C)
316 SS	1400°F (760°C)
316L SS	1400°F (760°C)
321 SS	1500°F (815°C)
347 SS	1500°F (815°C)
Monel	1500°F (815°C)
Inconel 600	2000°F (1093°C)
Carbon Steel	900°F (482°C)